

**Date:** 12/23/02

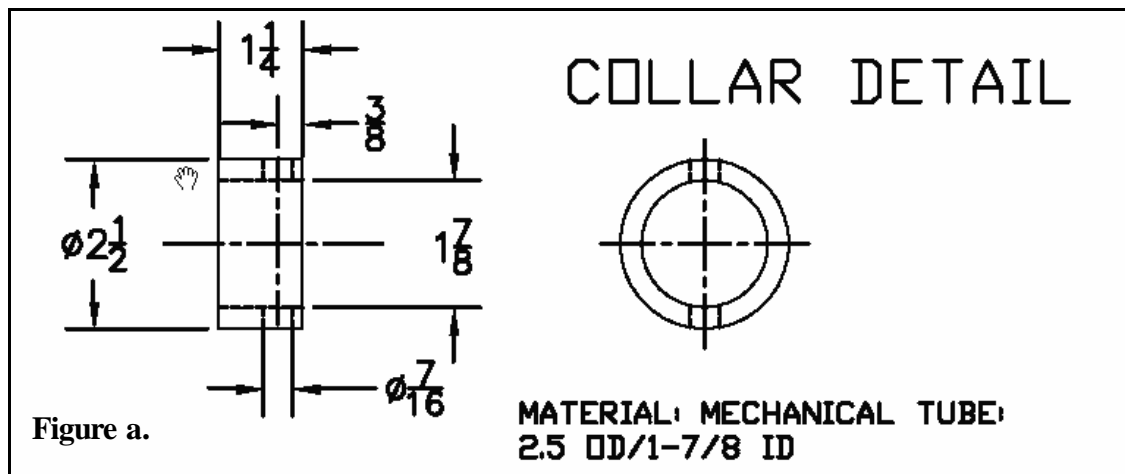
**Subject:** Mast Foot and Centralizer Modification.

**Unit/Part Affected:** CM45560-001 Split Centralizer.

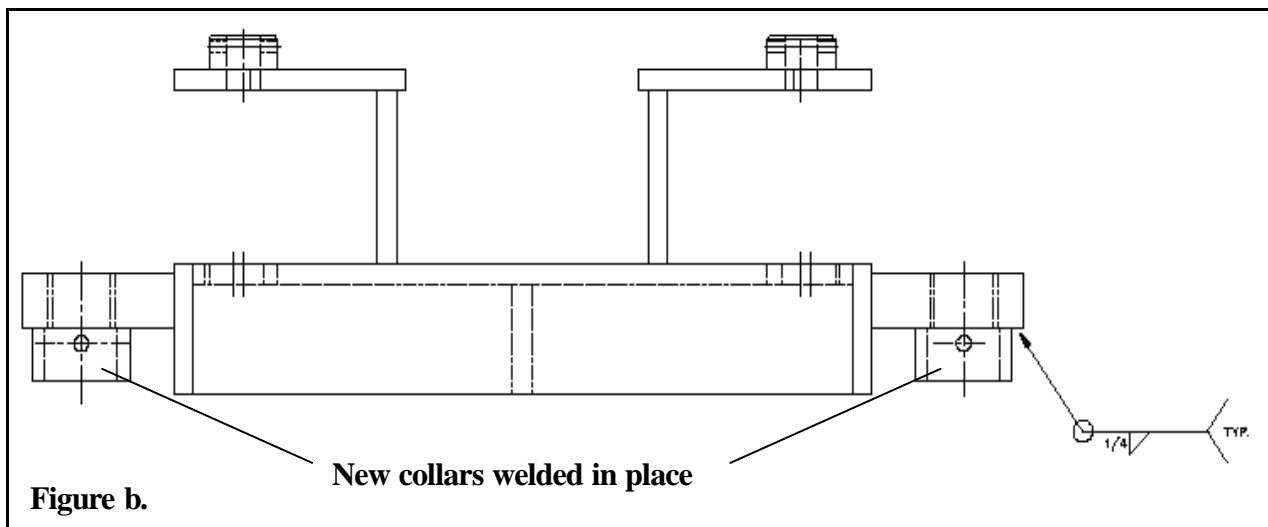
To help prevent the pins from falling out of the centraliser assembly while up-hole drilling the following modifications have to be made.

### Section 1 – New Collars and Mast Foot Modifications

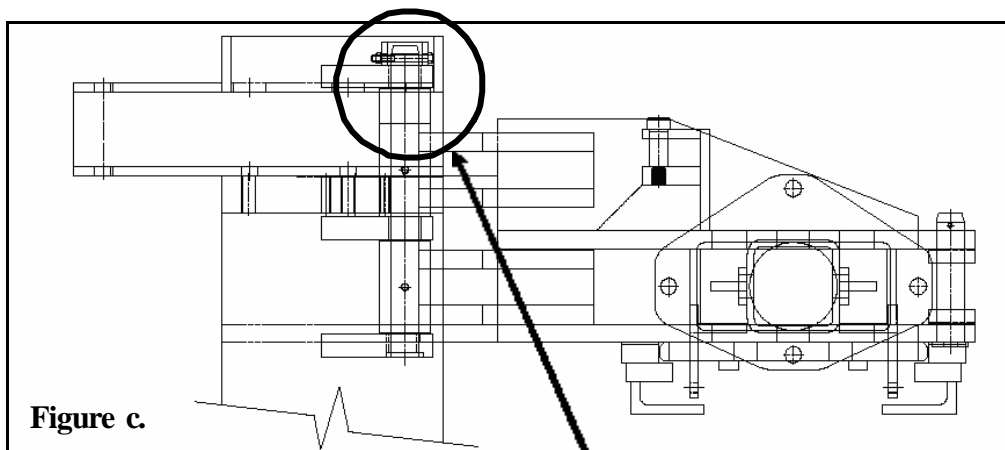
1. Make two collars as in figure a.



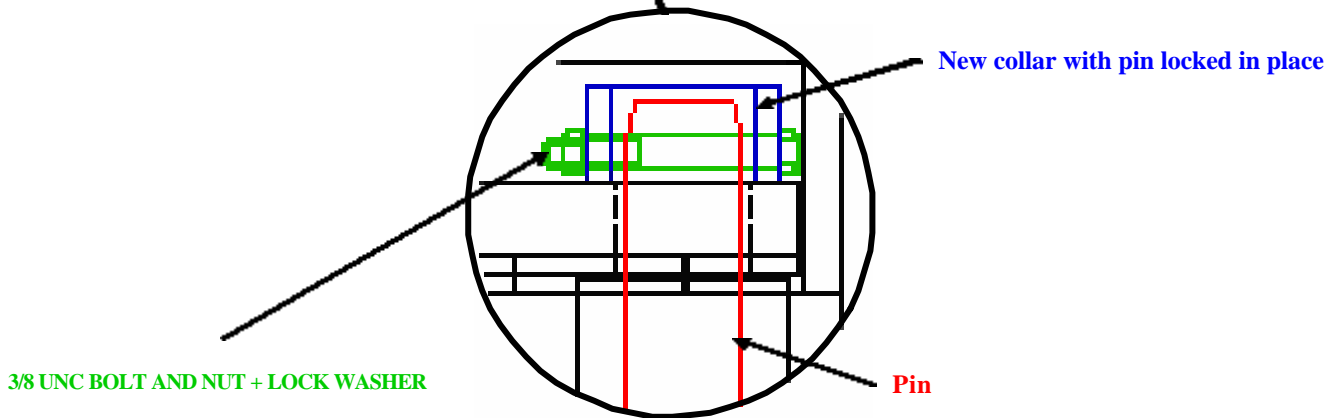
2. Weld them to the mast foot as shown in figure b.



These collars are used to retain the hinge pins in place by using 3/8" bolts as shown in figure c.



Centralizer assembly shown in reverse position for up-holes.

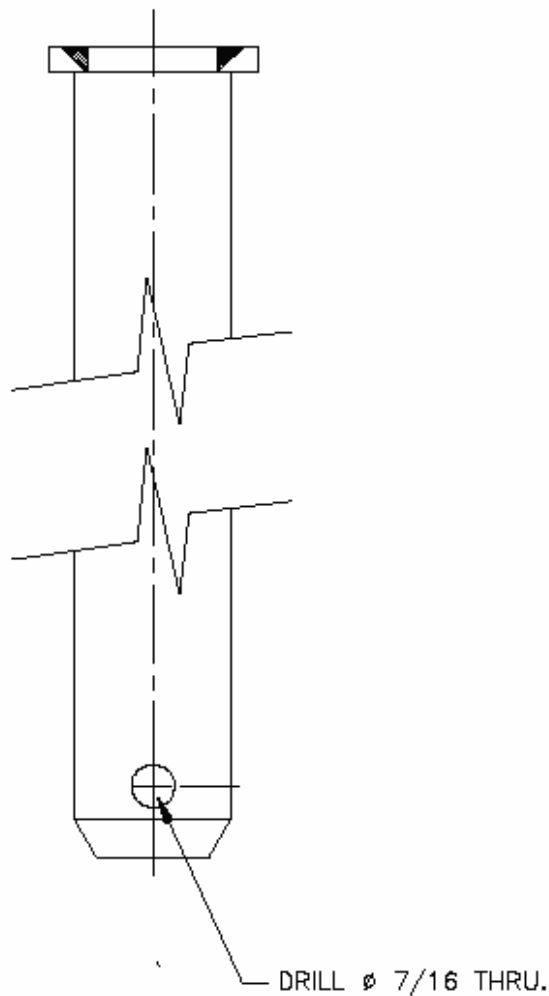


Cubex Drawing References for Modification:

- CM45560-003 MAST FOOT DRAWING
- CM45802-SC MAST FRAME ASSEMBLY

**Section 2 – Hinge Pins**

1. Make new hinge pins or drill a 7/16 hole in the existing pin as per figure d.

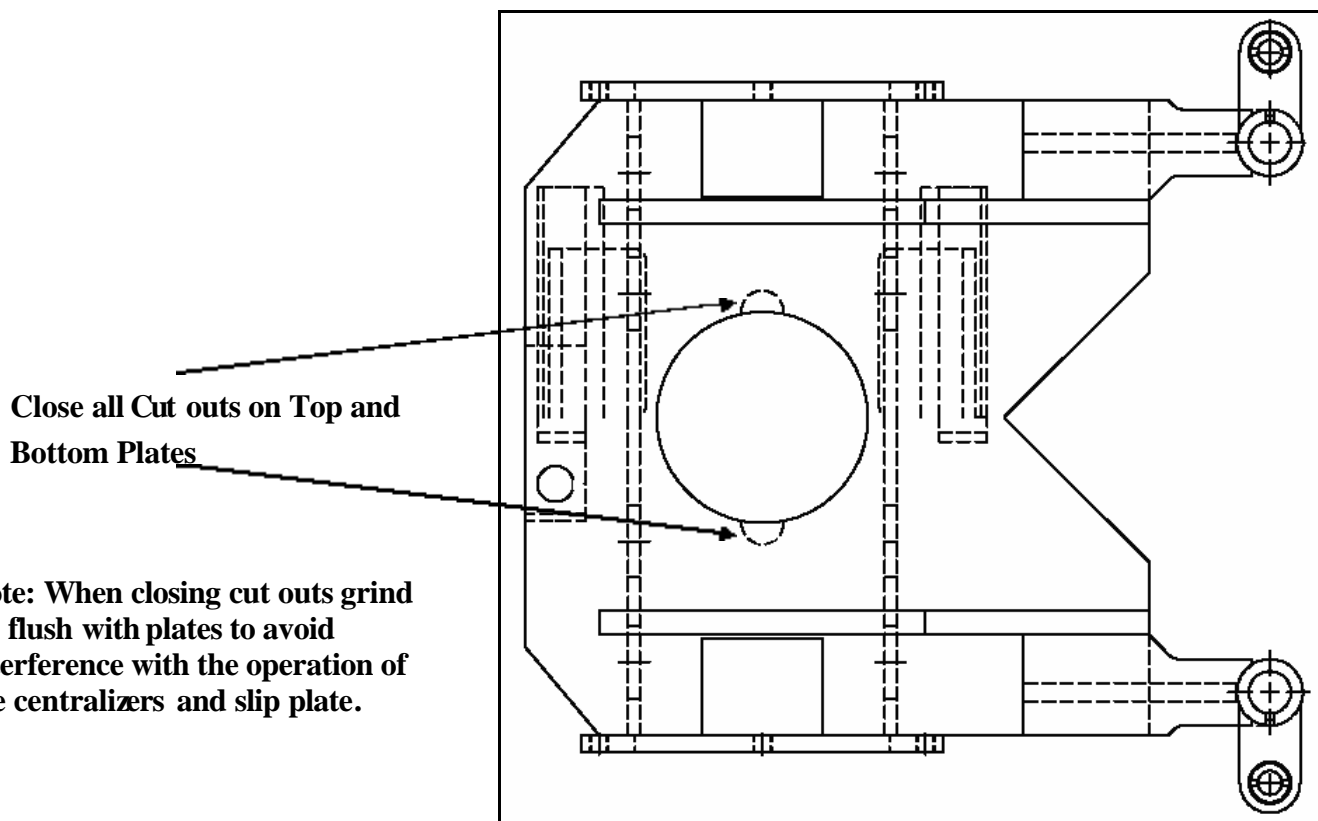
**Figure c.**

Cubex Drawing References for Modification:

- CM10022 Hinge Pin

**Section 2 – Centralizer Frame Modifications**

1. Close all half moon openings on the swing out centraliser frames as shown in Figure e. This will prevent the pins for the centralizer jaws from sliding out of place.



Cubex Drawing References for Modification:

- CM45560-001 Split Centralizer

*For more information please contact your  
nearest Cubex parts/service distributor*