



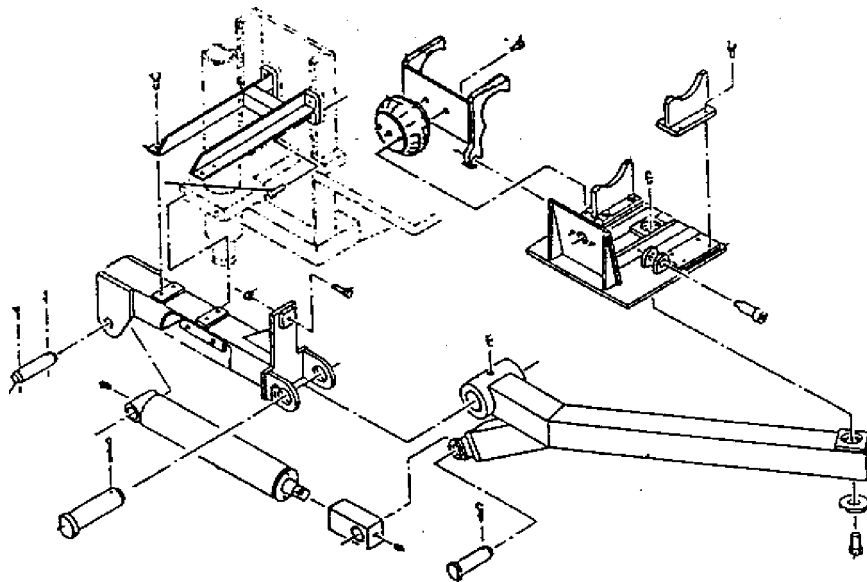
CUBEX LTD.
PRODUCT UPDATE

BULLETIN: PU-0012

DATE: APRIL 2, 1991

SUBJECT: DRILL ROD HANDLING SYSTEM

INFORMATION: Cubex now manufactures a Drill Rod Handling System. This system has been tested and proven to increase production, while making the drilling operation easier and safer for the drill operator.



For further information contact your local Cubex Ltd. Representative.

ADJUSTMENT PROCEDURE CM55900 PIPE ARM

ADJUSTMENT

Adjustment of the pipe arm will require the use of a 1/2" Allen wrench and one piece of drill pipe. Ensure the proper location of the stroke spacers as shown in figure 2.

1. Place drill pipe on arm and actuate pipe clamp air pressure at drill control panel. With the Top Drive moved to the top of the mast, move pipearm to the loading position as indicated in all figures.
2. Adjust screws **E** and **F** on the pipe clamp to achieve proper drill pipe vertical alignment. There should be no play in this adjustment.
3. Remove hydraulic lines and fittings on the SWING actuator to expose stroke adjusters inside all ports **A** and **B**. See figure 2.
4. Rotate stroke adjusters to achieve proper drill pipe alignment with the Top Drive. If adjustment is required, both **A**'s and/or both **B**'s should be set to achieve stroke stopping simultaneously.

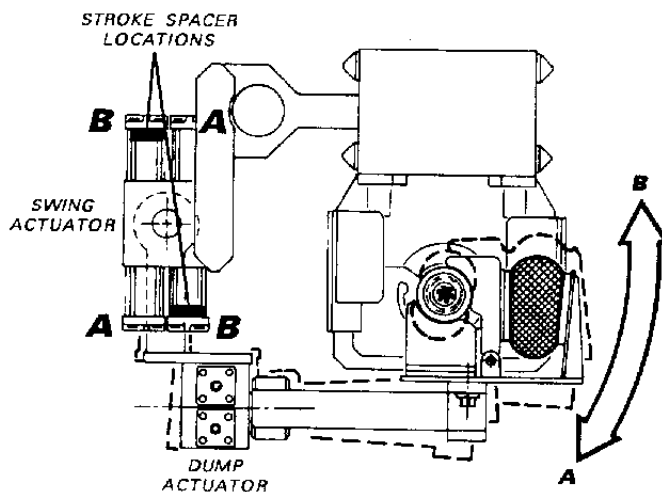


FIGURE 2.

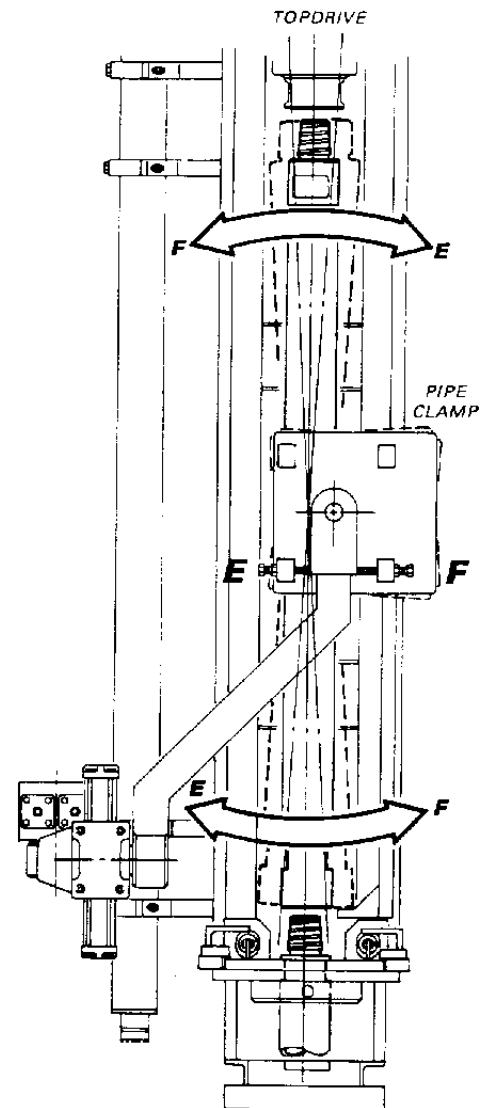


FIGURE 1.

ADJUSTMENT PROCEDURE CM55900 PIPE ARM cont'd

5. To adjust the DUMP actuator remove hydraulic lines and fittings to expose stroke adjusters inside ports **C** and **D**. See figure 3.

CAUTION !

WITH HYDRAULIC LINES REMOVED FROM DUMP ACTUATOR DRILL PIPE ARM MUST BE SUPPORTED OR A SAFETY CHAIN INSTALLED AS SHOWN X-X (FIGURE 3) OR INJURY MAY RESULT.

6. Rotate stroke adjusters to achieve proper drill pipe alignment with the Top Drive. If adjustment is required, both **C**'s and/or both **D**'s should be set to achieve stroke stopping simultaneously.
7. Reinstall hydraulic lines and fittings on both actuators, making sure there is no air in the lines. Test action of arm. If further adjustment is required repeat step 2-7.

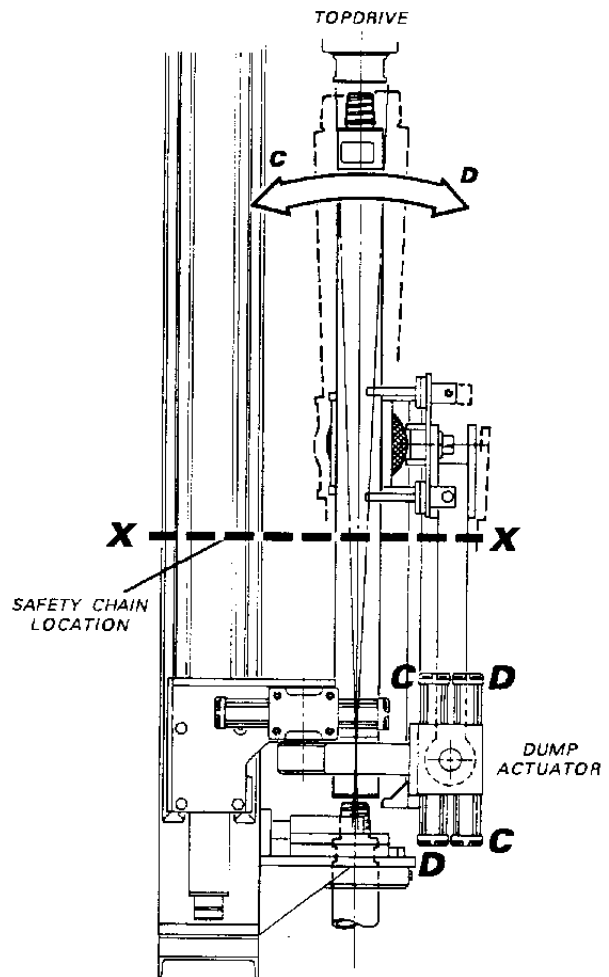


FIGURE 3.