

Date: 10/23/02

Subject: Load Checked Stinger Cylinder.

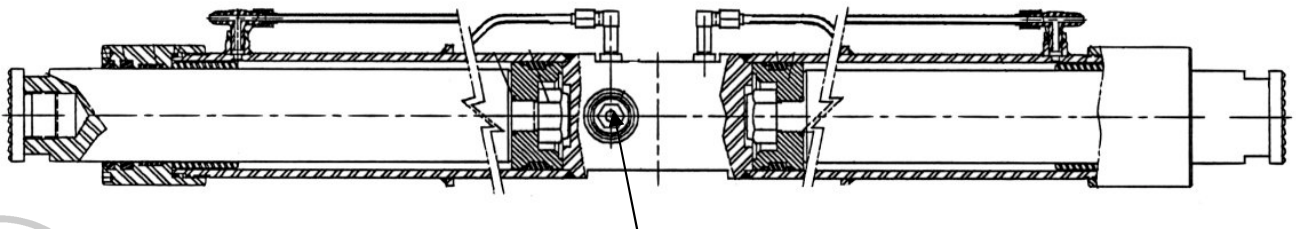
Unit/Part Affected: All Underground Cubex Drills

Cubex has developed a Stinger cylinder with check valves incorporated into the body of the cylinder. This new design also uses a 3" cylinder rod. This cylinder is available as Cubex P/N's CM77009 (6'2' split) and CM77007 for (4'4' split).

Benefits of this design are:

- 3" rod provides more support – less flex.
- 60/40 split gives the cylinder a longer reach to the back reducing the need for extensions.
- Internal load checks eliminate load checks and steel lines presently located inside of mast.
- Internal load checks help safeguard against injury due to sudden loss of pressure in system (i.e. if a hose burst the cylinder would stay in position).
- Internal load checks prevent creeping of cylinder due to slow leaks in the system.
- Internal load checks provide safer removal and handling of cylinder. (i.e. cylinder or component it is attached to won't unexpectedly shift when hose is removed.)

CM77009 60/40 Split Stinger Cylinder with integrated load checks



CP17037 Counter Balance Valve
(2 Installed – 1 on each side of cylinder)

*For more information please contact
your nearest Cubex parts dealer*

